



Building Future-Ready Infrastructures

Pre-Engineered Building Manufacturers



Table of contents

- About RKR Engineering
- Vision & Mission
- Core Values
- Our Core Capabilities
- Meet our Pillars of Strength
- Our Team
- Our Product Portfolio
- Technical & Quality Standards
- Manufacturing Facilities
- Industries We Serve
- Some Key Projects
- List of Few Projects
- Clients & Partners
- Why do we stand out?
- Contact Us

Foreword from our CEO (Operations)

Solid Expertise. Strengthened Infrastructures

At RKR Engineering, we believe buildings hold a deeper meaning than just steel and bolts. Our core belief, 'Where buildings aren't just built, they begin to belong'.

Every structure with us stands tall, expressing our pride in quality, trust in our technical prowess, and purpose in enhancing the nation's industrial infrastructure. Standing as the most reliable partner for all turnkey projects for more than a decade, we remain committed to our foundational values of client-centric design, timely execution, and high-end engineering precision.

As our state of progress continues, our focus remains two-fold: pushing the boundaries of engineering excellence through innovation and building & sustaining partnerships across the value chain.

By offering end-to-end capabilities, we are questioning the status quo & are constantly redefining our scope of work in the world of construction by looking forward to the possibilities of accommodating the dynamic client requirements. As a result, we aspire to be the one-stop structural solution for every industry vertical by centering all our project deliverables under the people-first philosophy.

I invite you to further explore knowing us, what we stand for, and how we keep continuously delivering promising & resilient infrastructures that are built to last.



Warm Regards

Mahesh Kumar.J

CEO (Operations), RKR Engineering

About **RKR Engineering**

RKR Engineering is a leading manufacturer of pre-engineered buildings (PEB) based in Chennai, India, with over 13 years of experience in providing structurally robust, timely, and economical building solutions. Supported by strong internal resources and a team of experienced engineers, we offer comprehensive steel construction services, encompassing design, detailing, manufacture, and on-site assembly.

We serve a wide range of clients in the real estate, logistics, manufacturing, and industrial corridors, notably in up-and-coming Tier 2 and Tier 3 cities also. We are different because we can make steel structures that are tailored to your needs and balance speed, strength, and structural integrity. We also form long-term connections with consultants, EPC contractors, and developers.

RKR Engineering, as a quality-first brand, epitomizes technical reliability, timely project execution, & dependable collaborations.





Vision

To become the go-to structural partner of choice, recognized for durable custom-designed pre-engineered buildings built with unmatched technical expertise, engineering precision, and trusted client partnerships.

Mission

To operate with technical leadership, design proficiency, innovation, cost-efficiency and deliver on-time, high-end custom-designed pre-engineered steel buildings.

Core Values

Quality

We have strict standards for planning, fabrication, & execution, so the structures we build last and work well.

Engineering Supremacy

Our endeavours are rooted in profound technological expertise, relentless creativity, & an ardour for accuracy.

Client-Centric Approach

We listen carefully, and act with a unified goal in mind: delivering long-lasting value and impact

Collaboration & Respect

We excel via partnership, both internally and externally, engaging with mutual respect & a common objective to attain excellence.

Accountability

We take complete accountability for the results, making sure that all our project deliverables are on time, accurate, & perform better than expected

Innovation-Centric Cognition

We consistently challenge the existing quo by incorporating intelligent tools, contemporary technologies, & innovative solutions into every construction project.

Prioritizing Safety

Safety is non-negotiable. We maintain an unwavering commitment to safeguard our staff, partners, and the communities we serve.

Our Core Capabilities

Delivering end-to-end customized & scalable structural solutions

Our strength at RKR Engineering is that we can handle the whole project lifecycle in one place. We offer complete solutions that always meet performance, reliability, and accuracy standards since engineering, manufacturing, and execution all work together seamlessly.

Structural Design and Detailing

We provide bespoke steel constructions integrated with accuracy, utilizing advanced design software and technical expertise. Each structure is optimized for safety, aesthetic appeal & functionality, customized to fulfil client-specific needs.

Production & Construction

Our internal fabrication facilities utilize CNC and automated technology, guaranteeing consistency, durability, and dimensional precision. Each component is manufactured under rigorous quality controls, conforming to standard norms of structural integrity.

Project Implementation and Installation

We deploy proficient site teams that adhere to a safety-centric, time-sensitive execution strategy. Every phase, from material handling to final assembly, is expertly overseen to guarantee smooth coordination, timely transfer, & dependable performance.

Meet Our Pillars Of Strength



Kumar N



Karthik Kumar J

Our Team

Where brilliant minds come together for a purpose and precision



Anitha Mahesh Kumar



Karnan K



Vijay Kumar P



Thirunavukkarasu R



Thangamuthu



Dinesh MR



Dhinesh Babu S



Indirakumar P



Muniprabu



Kokila



Bharat Rao



Magesh



Balamurali



Parthiban A



Velan



Karthik



Jaffar

Our Product **Portfolio**

Pre-Engineered Buildings

Pre-Engineered Buildings are steel structures produced in factories, utilizing standardized components for expedited assembly and installation. These structures are customized to meet particular project specifications and are optimal for scenarios where rapidity, cost-effectiveness, and scalability are essential. Our PEB systems provide rapid construction, economic efficiency, and structural integrity.

Salient **Characteristics:**

- Lightweight structures with exceptional load-bearing capability
- Enhanced design with sophisticated engineering software
- Weatherproof roofing and cladding systems
- Capable of scalability & future growth





Advantages

- Minimized material waste & expenses
- Accelerated construction schedules
- Exceptional quality assurance
- Minimal upkeep and extended lifespan of buildings

Applications

- Manufacturing Units
- Warehousing & Logistics Facilities
- Production Sites
- Agricultural & Food Storage Facilities
- Aircraft Shelters

Structural Steel Buildings

Structural steel buildings are durable, bespoke frameworks fabricated from hot-rolled steel sections. These structures are designed for superior strength, longevity, and flexibility, rendering them appropriate for intricate, large-scale, or multi-tiered infrastructure endeavors. Designed for durability and intricacy, our structural steel edifices are engineered to sustain substantial loads and intricate architectural designs.

Salient Characteristics:

- Custom-manufactured profiles exhibiting superior structural integrity
- Robust columns and beams
- Compatible with reinforced cement concrete & hybrid construction
- Fire-rated and corrosion-resistant options available.





Applications

- Industrial Facilities and Power Plants
- Institutional Campuses
- Commercial Developments
- Infrastructure Support Structures
- Public Utility Infrastructure

Advantages

- Extended span capacity and design flexibility
- Optimal for multi-level and high-rise edifices
- Facile retrofitting and structural alterations
- Exceptional durability and reusability of steel

Cold Roll Formed Buildings

Cold Roll Formed Buildings employ lightweight, precisely fabricated steel sections manufactured at ambient temperature. These structures are recognized for their straightforward installation, modular adaptability, and appropriateness for rapid construction applications, including mezzanines, cabins, and internal walls.

Salient Characteristics:

- High-strength galvanized steel components
- Produced using roll-forming technology for dimensional accuracy
- Components that are lightweight and resistant to corrosion
- Adaptable to many structural configurations





Applications

- Mezzanines and Walkways
- Temporary Structures & Portable Cabins
- Prefabricated Site Offices
- Internal Divisions and Cladding
- Retail and Pop-up Structures

Advantages

- Expedited manufacturing and assembly
- Decreased foundation load
- Economical for transient and medium-sized constructions
- Minimal site disturbance

Technical & Quality Standards

IS Standards

IS 104: ZINC CHROME PRIMER

IS 123: RED OXIDE PRIMER

IS 277: GALVANIZED STEEL SHEETS (PLAIN & CORRUGATED)

IS 800: COP FOR GENERAL CONSTRUCTION IN STEEL

IS 801: COP FOR USE OF COLD FORMED LIGHT GAUGE STEEL IN GENERAL BUILDING CONSTRUCTION

IS 806: COP FOR USE OF STEEL TUBES IN GENERAL BUILDING CONSTRUCTION

IS 807: COP FOR STRUCTURAL PORTION OF CRANES & HOISTS

IS 808: DIMENSIONS OF HR STEEL BEAMS, CHANNELS & ANGLES

IS 811: COLD FORMED LIGHT GAUGE STRUCTURAL STEEL SECTIONS

IS 813: SCHEME OF SYMBOLS FOR WELDING

IS 814 (P 1 & 2): COVERED ELECTRODES FOR METAL ARC WELDING OF STRUCTURAL STEELS

IS 815: CLASSIFICATION CODING OF COVERED ELECTRODES FOR METAL ARC WELDING OF STRUCTURAL STEELS

IS 816: COP FOR METAL ARC WELDING FOR GENERAL CONSTRUCTION IN MS

IS 817: COP FOR TRAINING & TESTING OF METAL ARC WELDERS

IS 822: COP FOR INSPECTION OF WELDS



IS 875 (P 1 TO 5): COP FOR DESIGN LOADS FOR BUILDINGS & STRUCTURES

IS 1161: STEEL TUBES FOR STRUCTURAL PURPOSES

IS 1200 (P8): METHOD OF MEASUREMENT OF STEEL WORK & IRON WORK

IS 1200 (P9): METHOD OF MEASUREMENT OF ROOF COVERING & CLADDING

IS 1200 (P14): METHOD OF MEASUREMENT OF GLAZING

IS 1200 (P15): METHOD OF MEASUREMENT OF PAINTING

IS 1239 (P 1 & 2): M/S TUBES & TUBULARS

IS 1254: CORRUGATED ALUMINIUM SHEETS

IS 1363 (P 1 TO 3): HEXAGON HEAD FASTENERS OF PRODUCT GRADE 'C'

IS 1364 (P 1 TO 5): HEXAGON HEAD FASTENERS OF PRODUCT GRADE 'A' & 'B'

IS 1367 (P 1 TO 18): TECHNICAL SUPPLY CONDITIONS FOR THREADED STEEL FASTENERS

IS 1477 (P 1 & 2): COP FOR PAINTING OF FERROUS METALS IN BUILDINGS

IS 1852: ROLLING & CUTTING TOLERANCES FOR HR STEEL PRODUCTS

IS 1893: CRITERIA FOR EARTHQUAKE RESISTANT DESIGN OF STRUCTURES

IS 2016: PLAIN WASHERS

IS 2062: HOT ROLLED MEDIUM AND HIGH TENSILE STRUCTURAL STEEL

IS 2074: RED OXIDE ZINC CHROME PRIMER

IS 2339: ALUMINIUM PAINT



IS 2527: COP FOR FIXING GUTTERS AND RAIN WATER PIPE FOR ROOF DRAINAGE

IS 2932: SYNTHETIC ENAMEL PINTS

IS 3502: STEEL CHEQUERED PLATES

IS 4000: HIGH STRENGTH BOLTS IN STEEL STRUCTURES

IS 5624: FOUNDATION BOLTS

IS 6639: HEXAGONAL BOLTS FOR STEEL STRUCTURES

IS 7205: SAFETY CODE FOR ERECTION OF STRUCTURAL STEEL WORK

IS 7215: TOLERANCES FOR FABRICATION

IS 7280: BARE WIRE ELECTRODES FOR SUBMERGED ARC WELDING OF STRUCTURAL STEELS

IS 8172: VERTICAL STEEL LADDER

IS 12843: TOLERANCES FOR ERECTION OF STEEL STRUCTURES



MBMA Standards

- AISI S100, North American Specification for the Design of Cold-Formed Steel Structural Members, Washington, DC, 2016
- AISC 360, Specification for Structural Steel Buildings, American Institute of Steel Construction, Chicago, IL 2016.
- AWS Standards

Manufacturing Facilities

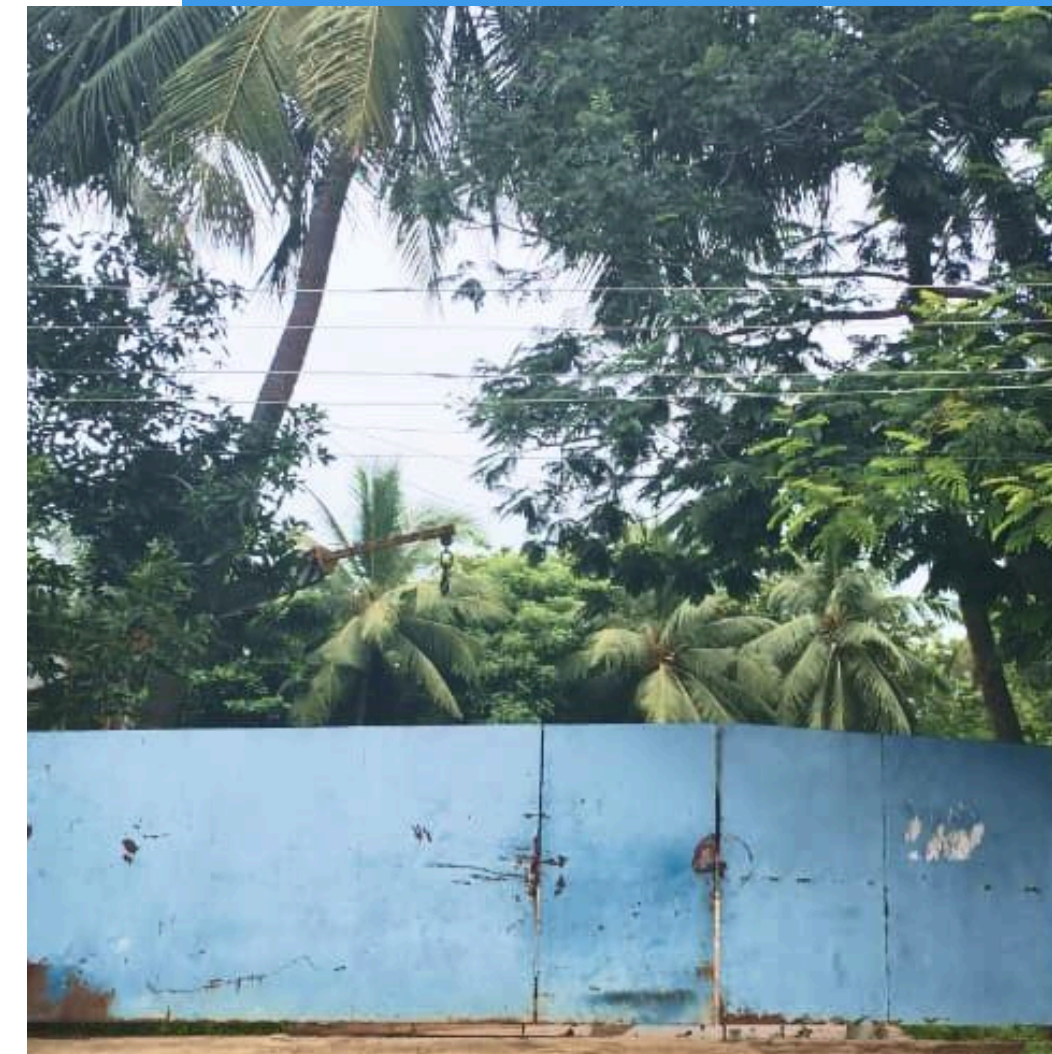
Unit Factory 1:

Address: Plot No.132, Vellanur Village, Kattur, Ambattur
Taluk, Thiruvallur District, Chennai, Tamil Nadu- 600062

Plot Area: 21, 000 Sq.ft facility

Machinery Used:

- Saw welding machinery – 2 sets
- Punching machinery
- Heavy duty TCT cutter drilling machine,
- MIG welding machines,
- Arc welding machines,
- 10T capacity mobile crane, & other required machinery
- Air compressor for painting



Unit Factory 2:

Address: Plot No.53 and 54, Women Industrial Park, Sidco Industrial Estate, Thirumullaivoyal, Chennai, Tamil Nadu-600062

Plot Area: 42,000 Sq.ft facility

Machinery Used:

- PTAW (Pull Through Auto Welding) Line,
- CNC FLAME CUTTING MACHINE
- EOT Crane of 7.5 MT capacity
- MIG welding machines
- Arc welding machines,
- 12T capacity mobile crane,
- Air compressor for painting, & other required machinery
- Set of all erection and sheeting tools.
- Roll forming machine for C/Z section



Industries **We Serve**

For many years, RKR Engineering has made custom steel structures for a lot of different businesses, each with its own set of functional needs, environmental conditions, and operational challenges. Our sector-focused approach makes sure that every project is not only made to work, but also to fit with our clients' long-term growth.



Warehousing & Distribution



Manufacturing & Processing



Institutional & Public Sector



Cold Storage & Agro Facilities



Automotive & Ancillaries



Textiles & Garments



Logistics & Transportation



Pharmaceutical Production

Some Key Projects

Client: NASDA Infra pvt ltd

Area: 4,50,000 Sq.ft

Consultant: RSB Consultants

Type of Building: Warehouses

Location: Angadu, Tamil Nadu

Completed Year: 2023





Client: MMG HOLDINGS

Area: 72,000 Sq.ft

Consultant: Jayam Consultants

Type of Building: Warehouses

Location: Alamathi, Tamil Nadu

Completed Year: 2020





Client: LOGON INDIA INFRASTRUCTURE P LTD

Area : 4,60,000 Sq.ft

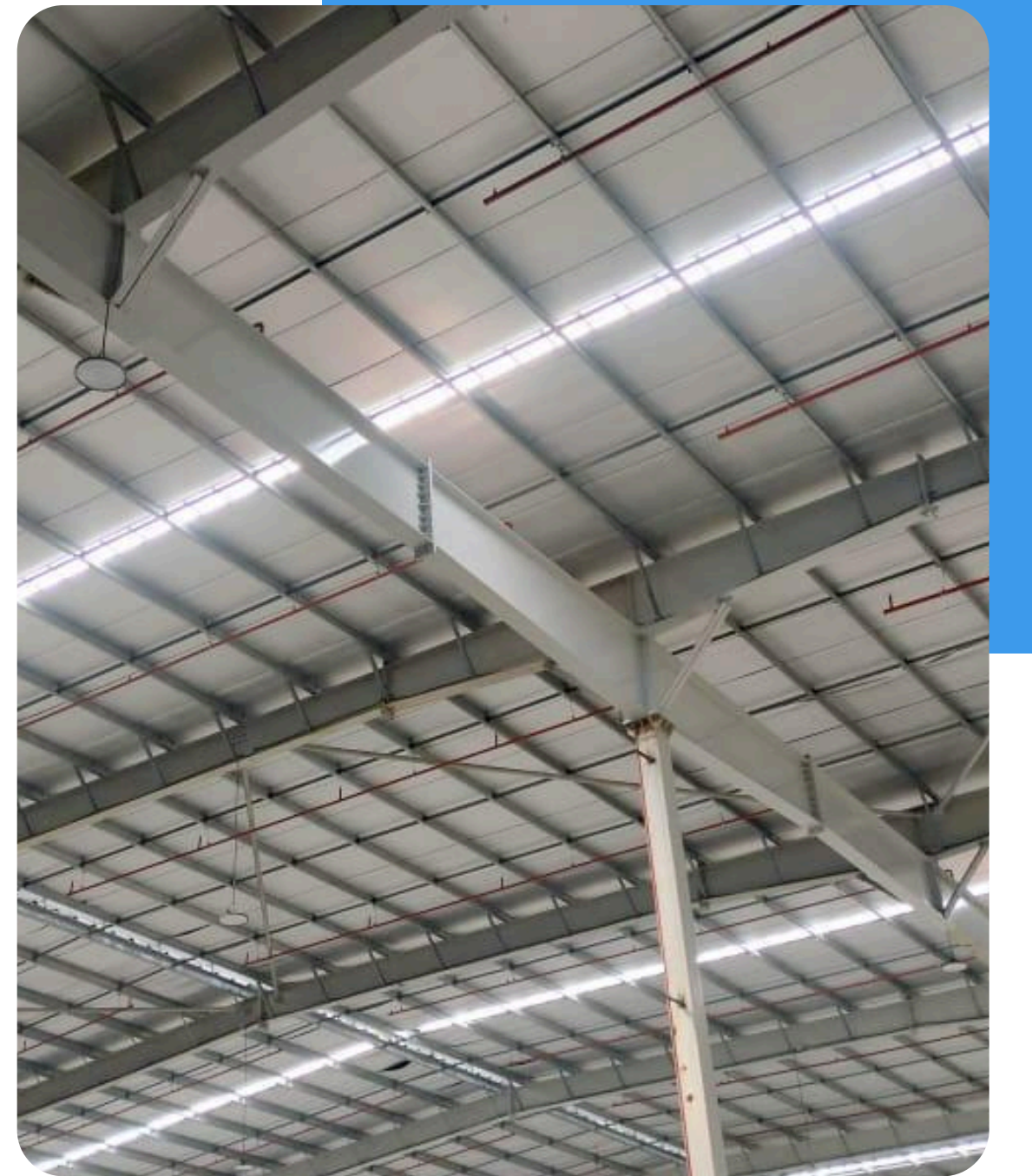
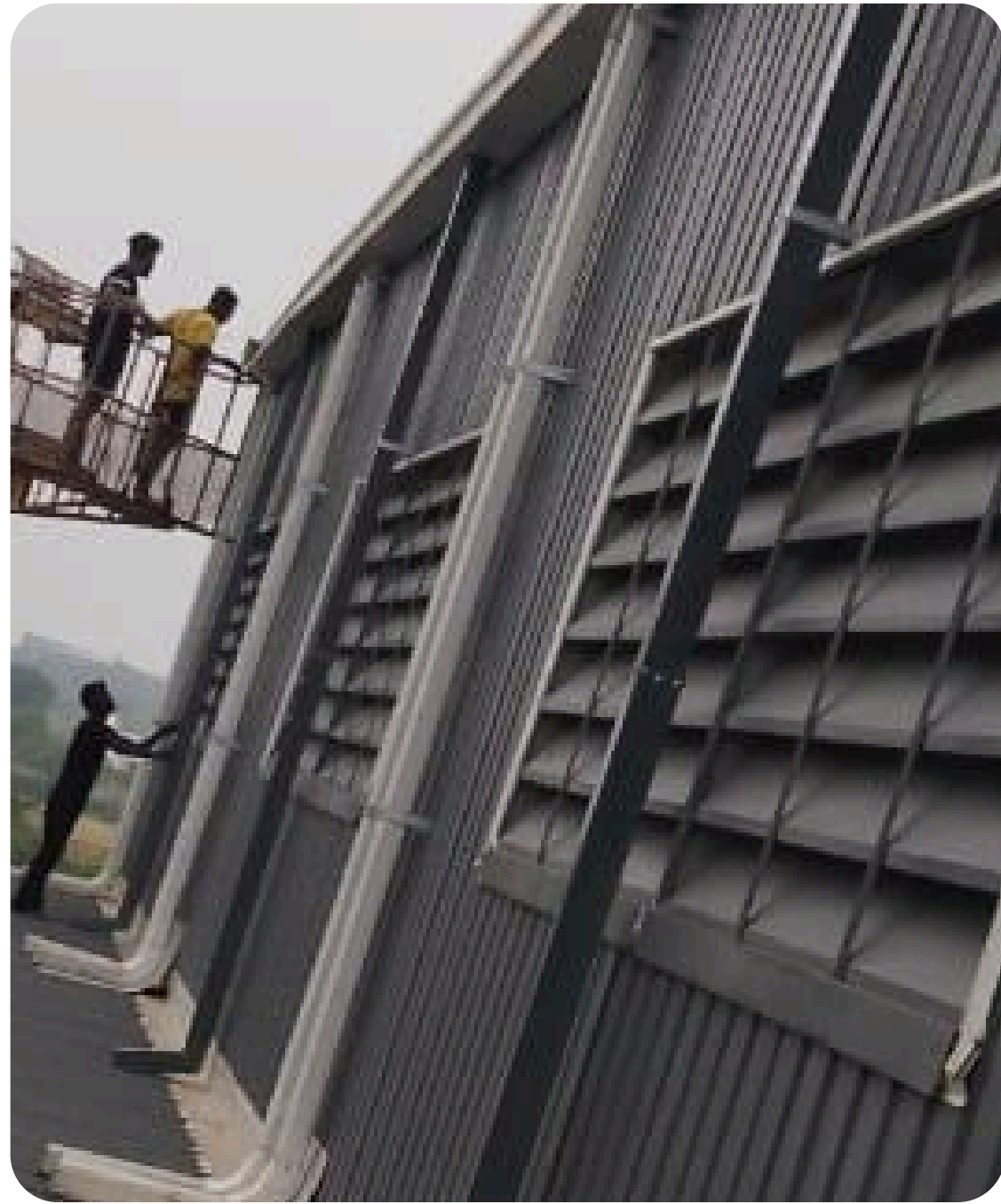
Consultant : Jayashree Consultants

Type of Building : Warehouses

Location: Pagalmedu, Tamil Nadu

Completed Year: 2024





Client: NDR SAFESTORE LLP

Area : 3,80,000 Sq.ft

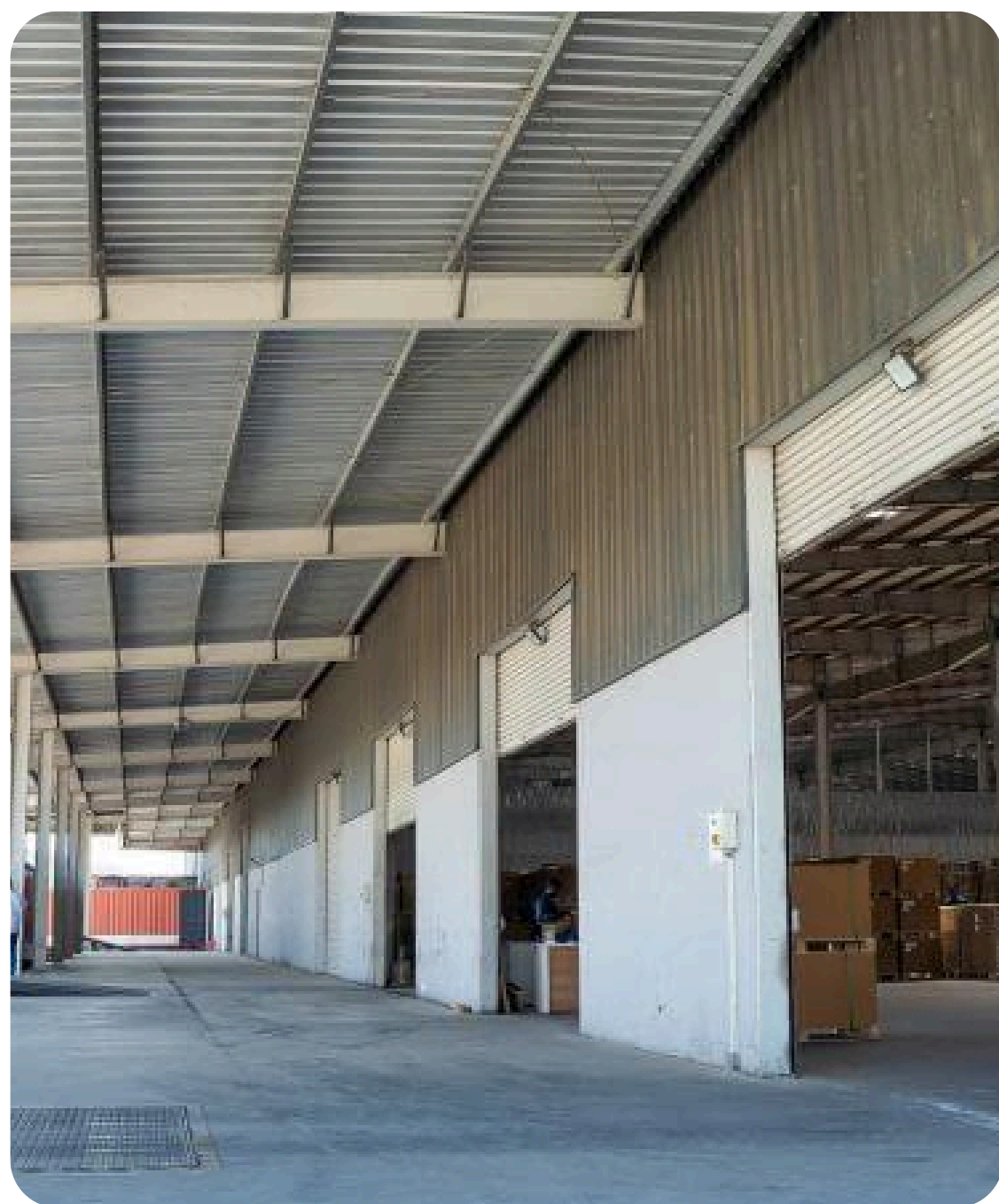
Consultant : Jayashree Consultants

Type of Building : Warehouses

Location: Oragadam, Tamil Nadu

Completed Year: 2022





Client: SUPREME POWER EQUIPMENT LTD

Area : 1,00,000 Sq.ft

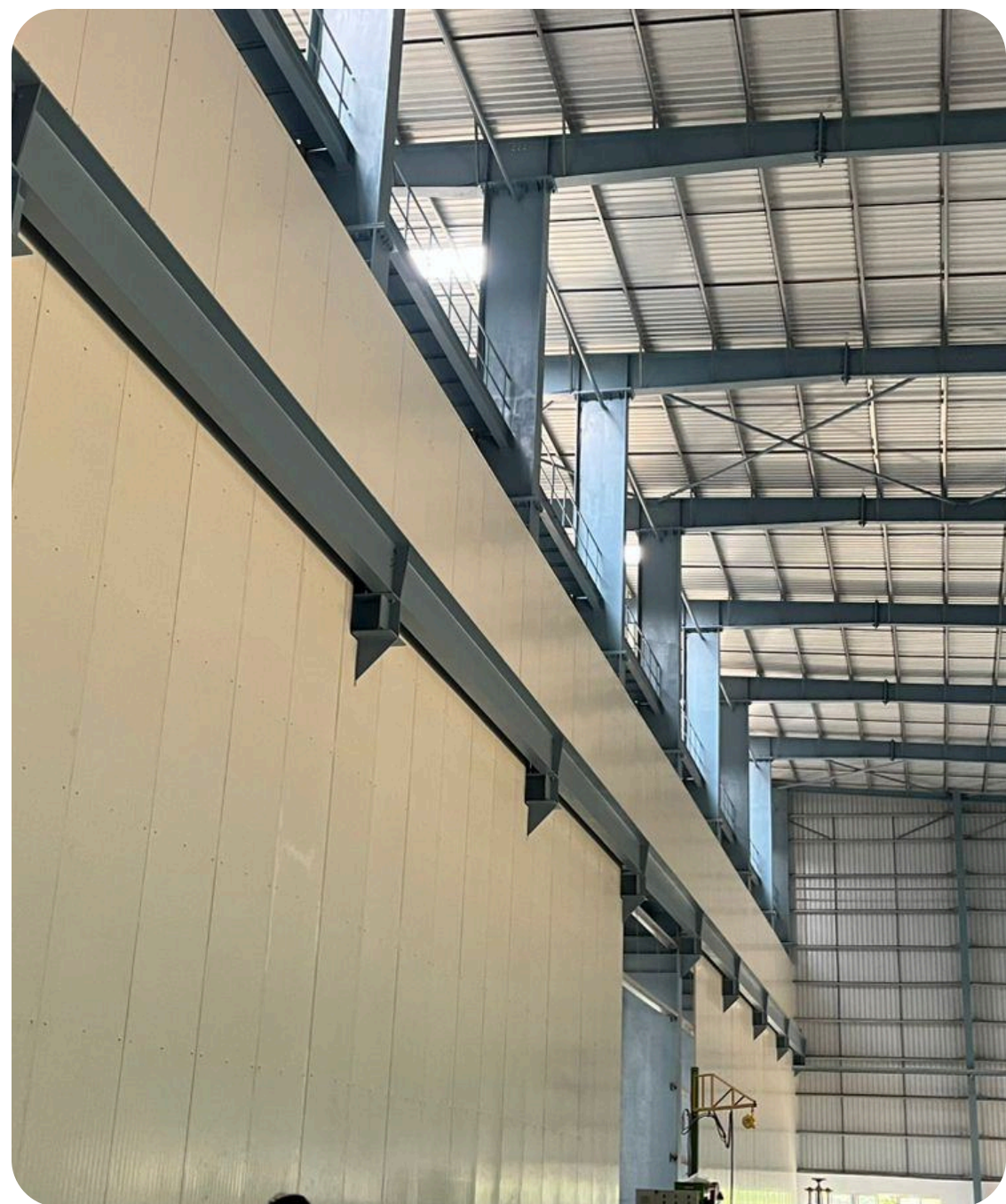
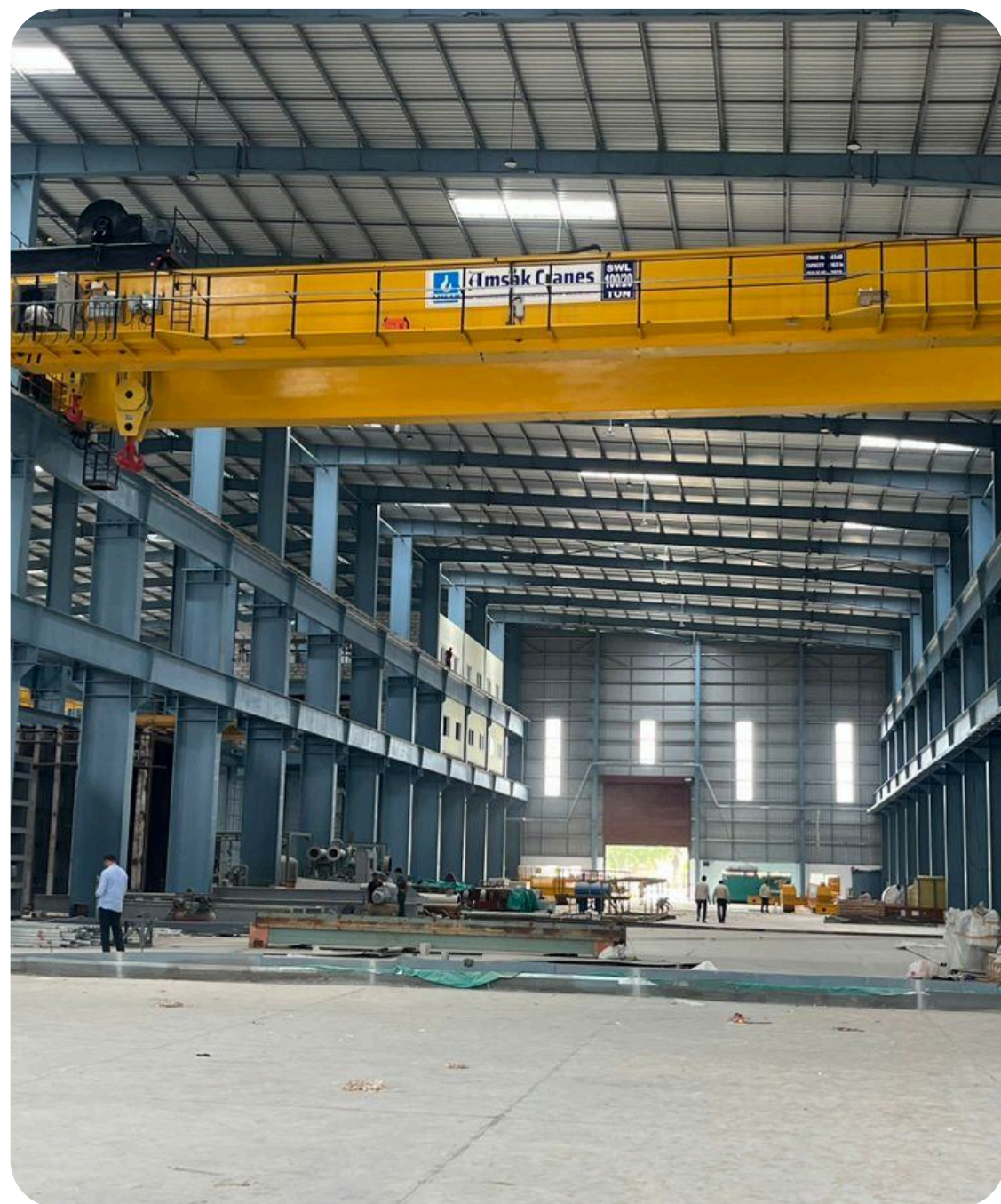
Consultant : VRM Consultancy

Type of Building : Production Building with
Multilevel EOT upto 100
Ton Capacity

Location: Kannur, Tamil Nadu

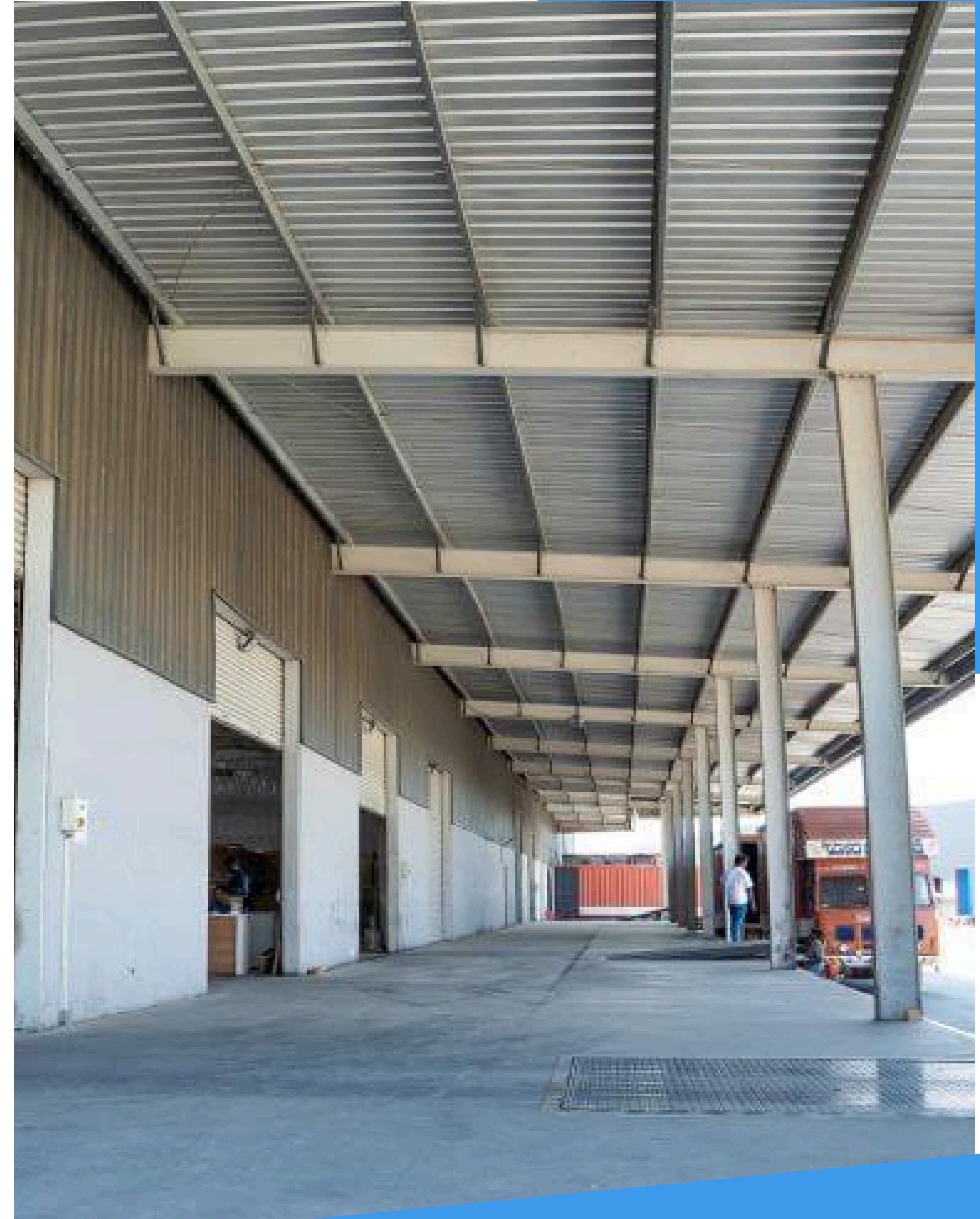
Completed Year: 2025





List of Few Projects

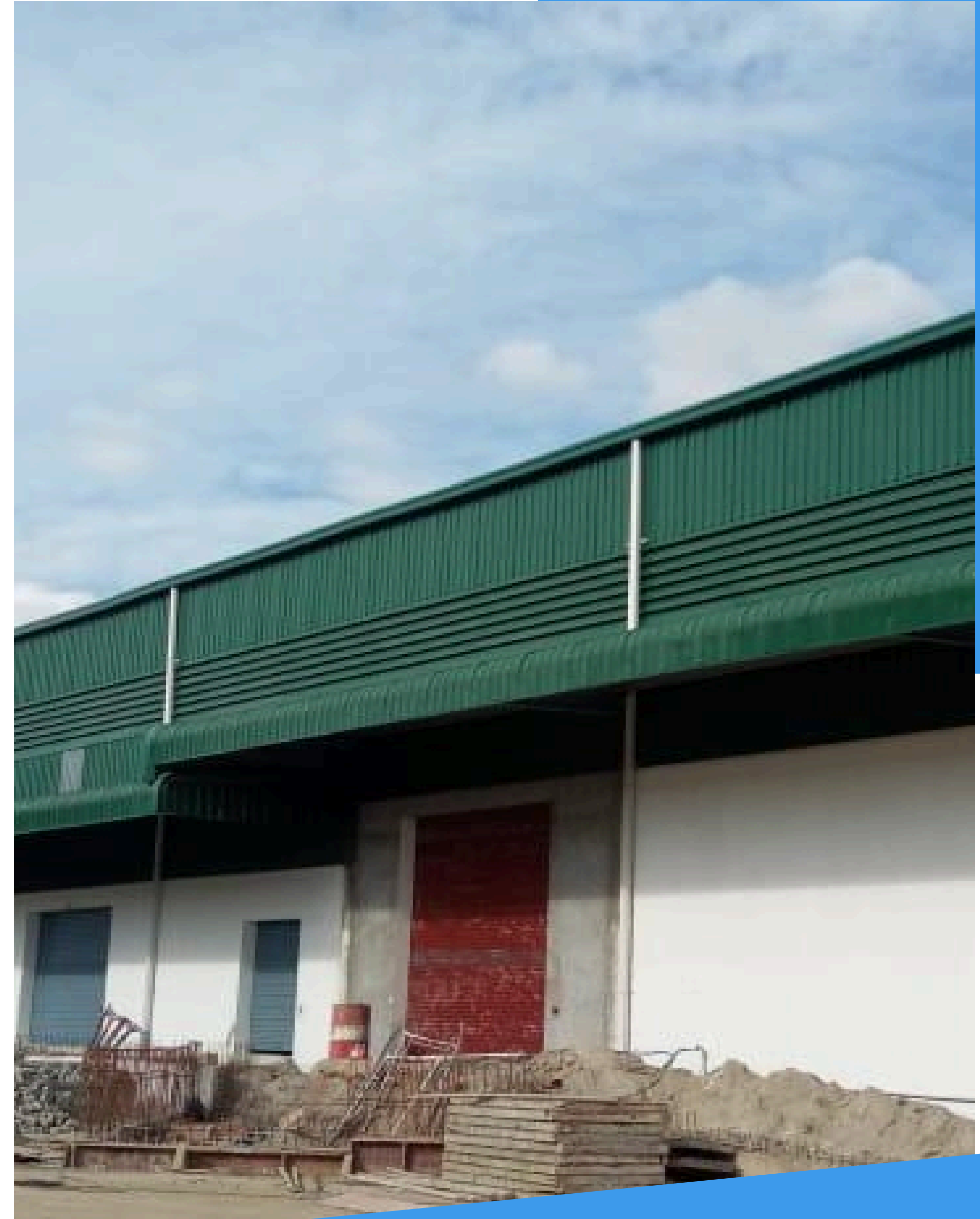
- MMG Warehousing – 72,000 Sq. ft Warehouse near Chennai
- MRF Limited – Paint shop (Allied structural) for M/s. CRN
- NDR Warehousing – 2.3 Lac Sq. ft Warehouse at Ayalcheri
- Sun Estates – 1.1 Lac Sq. ft Warehouse at Irungatukottai
- Berger Paints – Pilot plant at Pondicherry for M/s. CRN
- Titan India Ltd – Training center in Hosur
- Dawnsun Exim Corporation – Machine shop in Pillaipakkam, Chennai
- A.S. Cargo Movers (P) Ltd – Warehouse in Hosur
- Vyra Industries – 1.2 Lac Sq. ft Warehouse near Chennai
- Expansion of Production Building for Dodla Dairy at Nellore
- Existing Building expansion for Hindustan Unilever Limited at Hosur
- NDR Safehouse LLP – 3.35 Lac Sq. ft Warehouse at Oragadam
- AS Carriers Retrofitting Works at Irungatukottai (3 Lac Sq. ft Warehouse)
- Industrial Building for IDRI at Oragadam



- Kautilya Warehousing – 2.25 Lac Sq. ft near Bangalore
- NDR Infrastructure – 1.05 Lac Sq. ft at Ennore
- Amruthalingeswara Warehousing LLP – 2.1 Lac Sq. ft at Puchiathipet (Supply only)
- Tee Win – 40000 Sq. ft at Sunguvarchatram
- ESAB India Ltd., Irungatukottai – Retrofitting works (48,000 Sq. ft Warehouse)
- NDR Safe store LLP – 65000 Sq. ft Warehouse at Oragadam.
- Spring feel Polyurethane Foams P Ltd – 13000 Sq. ft Storage building at Kelambakkam
- Mechatronics – 27000 Sq. ft Machine shop at Pillaipakkam.
- Nazda Warehousing – 4.2 Lac Sq. ft at Angadu
- GCR Foods & Beverages – Mango pulp plant at Chittoor.
- Creative Technologies – Mango pulp plant at Chittoor.
- Sri city (Warehouses) – 45000 Sq. Ft
- Goodluck feeds – Aqua feed processing plant at Nellore.
- Logon Warehousing – 4.5 Lac Sq. ft at Pagalamedu



- NDR Infrastructure – 1.94 Lac Sq. ft Warehouse at Ennore
- Shri Vaikunt Logistics at Budur., Redhills
- NDR Space Pvt. Ltd – 1.15 Lac Sq. ft at Karanipet., Redhills
- Machinery Platform structure for TITAN at Hero Motors., Sri city
- MEIPL – Machine shop expansions at Pillaipakkam & Mahindra city
- Production building for M/s. Supreme Power at Sriperumbudur (Transformer manufacturing facility with 100 Ton EOT).
- Production building for M/s. Clastek Engineering at Sriperumbudur.



Clients & Partners





Why do **We Stand Out?**

For every dynamic structure, versatile & customized building solutions

- In-house design, fabrication & erection
- Cost-Effective, Durable Structures
- 100% safety compliance at every site
- Consistent track record of timely project delivery
- Customizable solutions across industries

Contact Us

Corporate Office

1st Floor, Old No.38, New
No.72, Teachers Colony, Adyar,
Chennai, Tamil Nadu 600020

+91 9962963222

Email ID: info@rkrengineering.in

Register Office

9/26A, Bharathiyar
Street , Nehru nagar ,
velacherry ,Chennai,
Tamil Nadu- 600042

+91 9962963222

Unit Factory 1

Plot No. 132, Vellanur Village
Kattur, Ambattur Taluk ,
Thiruvallur District, Chennai,
Tamil Nadu - 600062

Unit Factory 2

Plot No. 53 and 54,
Women Industrial Park
Sidco Industrial Estate,
Thirumullaivoyal, Chennai,
Tamil Nadu - 600062